



SFJ CSV Scheduler Quick User guide

Core CSV Scheduler is a tool designed by SFJ systems to schedule almost any production jobs typically manufacturing but could schedule anything that is time and operation based even projects. This is a free system and presents only the basic functionality never the less this simple tool gives you a chance to create a precise schedule. It is memory resident so the schedule cannot be saved although the schedule can be exported to a report when complete.

It is easy to use. All you need to do is prepare two csv files one with the resources available and the other one with jobs. There are sample files you can download from the system and adjust to your requirements these are in the "Example CSV" tab.

To operate there are Three steps to take:

- 1) SFJ_Resource.csv file: It is set to operate as a default 5 days Monday to Friday and the user edits the resource CSV file with shift patterns to use. If a seven-day shift is required then select the option 7 Days. The schedule requires resource groups to allow balancing of jobs on similar resources. Resources can be set to infinite or finite using a zero or 1 where zero is finite. When the resource data is imported the system resets the whole schedule.

It is important not to add or change the spreadsheet header as this is specifically set for this system.

Choose the resource file then upload.

Step One

Select a Resource file to upload:

No file chosen

Note: If you are not using resource groups then this is optional. If not uploaded then all resources will be given a default shift time of 06:00-18:00.

Shift Pattern:

	A	B	C	D	E	F
1	RESOURCE	START	END	GROUP ID	INFINITE	
2	CNC 1	07:00	19:00	CNC	0	
3	CNC 2	07:00	19:00	CNC	0	
4	MILL 1	07:00	19:00	MILL	0	
5	MILL 2	07:00	19:00	MILL	0	
6	DRILL 1	07:00	19:00	DRILL	0	
7	GRIND 1	07:00	19:00	GRIND	0	
8	INSP	08:00	17:00	INSP	0	
9	DESPATCH	08:00	17:00	DESPATCH	0	
10						

SFJ SYSTEMS LTD

Andil House, Court Street, Trowbridge, Wiltshire BA14 8BR

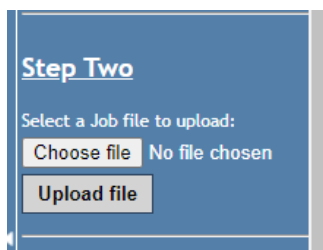
Tel: 01225 775103 Fax: 01225 774877 Website: www.sfjssystems.co.uk



2) SFJ_Jobs.csv: Contains the route card for manufacture it is important not to change the spreadsheet headers but just change the data below. As this is a simple free scheduler there are some rules to keep to.

- a. The "Order Number" must be the same for each operation for the individual job
- b. Operation numbers increase though the route card, example: 10,20,30
- c. RPH (rate per hour), TPI (time per item), TPB (time per batch) are the time operators, time is in minutes.
- d. Colours are hex numbers
- e. Date is the earliest start date of the job.
- f. Due Date is the expected deliver date.

Choose the Jobs file then upload.



Before any jobs have been scheduled.

Note: Resource= Blank (unscheduled)

Jobs.csv

	A	B	C	D	E	F	G	H	I	J	K	L	M
1	SKU	RESOURCE	RATE	RATE TYPE	SETUP	QUANTITY	DATE	ORDER NUMBER	OP	COLOUR	RESOURCE GROUP	DUE DATE	
2	PART #1		20	RPH	10	30	15/12/2020 00:00	10	10	#00FF00	CNC	12/12/2017	
3	PART #1		5	TPI	20	30	15/12/2020 00:00	10	20	#00FF00	MILL	12/12/2017	
4	PART #1		40	RPH	0	30	15/12/2020 00:00	10	30	#00FF00	DRILL	12/12/2017	
5	PART #1		45	TPB	0	30	15/12/2020 00:00	10	40	#00FF00	INSP	12/12/2017	
6	PART #2		10	RPH	0	100	15/12/2020 00:00	11	10	#FF6600	CNC	12/12/2017	
7	PART #2		30	TPB	0	100	15/12/2020 00:00	11	20	#FF6600	INSP	12/12/2017	
8	PART #3		7	TPI	0	80	15/12/2020 00:00	12	10	#ffff00	MILL	12/12/2017	
9	PART #3		50	RPH	0	80	15/12/2020 00:00	12	20	#ffff00	DESPATCH	12/12/2017	
10	PART #4		20	RPH	0	50	15/12/2020 00:00	13	10	#80ff00	CNC	12/12/2017	
11	PART #4		6	TPI	0	50	15/12/2020 00:00	13	20	#80ff00	MILL	12/12/2017	
12	PART #4		40	RPH	0	50	15/12/2020 00:00	13	30	#80ff00	DRILL	12/12/2017	
13	PART #4		45	TPB	0	50	15/12/2020 00:00	13	40	#80ff00	INSP	12/12/2017	
14	PART #4		10	RPH	0	50	15/12/2020 00:00	13	50	#80ff00	DESPATCH	12/12/2017	
15	PART #5		20	RPH	0	120	15/12/2020 00:00	14	10	#00FF00	CNC	12/12/2017	

SFJ SYSTEMS LTD

Andil House, Court Street, Trowbridge, Wiltshire BA14 8BR

Tel: 01225 775103 Fax: 01225 774877 Website: www.sfjssystems.co.uk



Exporting a schedule generates a file called SFJExportJobs.csv.

Adding a **New Job** to the schedule file.

Note for the scheduled Job:

Resource = For the scheduled Job, Resource displays the actual resource scheduled
 Launch, Start, End displays the schedule dates and times

For a **New Job** added to SFJExportJobs.csv:

Resource = Blank not Scheduled
 Launch, Start & End = Blank not scheduled
 Date = Early Start Date & Due date
 Resource Group = Group to use as a new job

SFJExportJobs.csv

	A	B	C	D	E	F	G	H	I	J	K	L	M	N
1	SKU	RESOURCE	RATE	RATE TYPE	SETUP	QUANTITY	DATE	ORDER NUMBER	OP	COLOUR	RESOURCE GROUP	LAUNCH	START	END
41	PART #9	INSP	20	TPB	0	40	18/12/2020 00:00	18	50	#00FF00		22/12/2020 09:32	22/12/2020 09:32	22/12/2020 09:52
42	PART #9	DESPATCH	20	TPB	0	40	18/12/2020 00:00	18	60	#00FF00		22/12/2020 09:52	22/12/2020 09:52	22/12/2020 10:12
43	PART #10	CNC 2	40	RPH	0	100	18/12/2020 00:00	19	10	#ff8000		21/12/2020 10:00	21/12/2020 10:00	21/12/2020 12:30
44	PART #10	MILL 1	5	TPI	0	100	18/12/2020 00:00	19	20	#ff8000		22/12/2020 10:30	22/12/2020 10:30	22/12/2020 18:50
45	PART #10	GRIND 1	10	RPH	0	100	18/12/2020 00:00	19	30	#ff8000		23/12/2020 10:14	23/12/2020 10:14	24/12/2020 08:14
46	PART #10	INSP	60	TPB	0	100	18/12/2020 00:00	19	40	#ff8000		24/12/2020 08:14	24/12/2020 08:14	24/12/2020 09:14
47	PART #10	DESPATCH	40	TPB	0	100	18/12/2020 00:00	19	50	#ff8000		24/12/2020 09:14	24/12/2020 09:14	24/12/2020 09:54
48	PART #8		40	RPH	0	66	22/12/2020 00:00	28	10	#0040ff	CNC			
49	PART #8		5	TPI	0	66	22/12/2020 00:00	28	20	#0040ff	MILL			
50	PART #8		10	RPH	0	66	22/12/2020 00:00	28	30	#0040ff	DRILL			
51	PART #8		60	TPB	0	66	22/12/2020 00:00	28	40	#0040ff	GRIND			
52	PART #8		40	TPB	0	66	22/12/2020 00:00	28	50	#0040ff	DESPATCH			



3) After the files have been uploaded you can schedule jobs either using default setting or change settings on the menu. By just clicking on Schedule Jobs will generate a schedule. By changing the options will alter the schedule. The schedule can be manually changed by just grabbing the operation and moving to another resource or time.

<p>Step Three</p> <p>Schedule Algorithm: <input type="text" value="Forward schedule"/></p> <p>Schedule By: <input type="text" value="By Job"/></p> <p>Shift Algorithm: <input type="text" value="Span shift"/></p> <p>Move Algorithm: <input type="text" value="Just this job"/></p> <hr/> <p>Gantt Start date: <input type="text" value="16/12/2020"/></p> <p>Days To View <input type="text" value="7 Days"/></p> <p>Gantt Type: <input type="text" value="By Resource"/></p> <p>Horizontal Zoom: 100%</p> <p>Vertical Zoom: 100%</p> <p><input type="checkbox"/> Fit to Schedule <input checked="" type="checkbox"/> Show Unscheduled Jobs <input type="checkbox"/> Show Grid Lines</p> <p>Schedule Jobs</p> <p>Reset</p> <p>Refresh</p> <p>Export</p> <p><input type="checkbox"/> Show Debug Data</p> <p>Search WO/SKU/ProcOrder <input type="text"/></p> <p>Notes:</p> <ul style="list-style-type: none"> • Hover over a job for a summary. • Click and drag a job to move it. • Click a job to see linked 	<p><input type="text" value="Forward Schedule with resc"/> Schedule Algorithm option to change algorithm</p> <p><input type="text" value="By Op"/> Schedule a job at a time or change for Op at a time.</p> <p><input type="text" value="Span shift"/> <input type="text" value="Start within shift"/> <input type="text" value="Start & End within shift"/> <input type="text" value="Span shift"/> <input type="text" value="Overrun shift"/> <input type="text" value="Gantt Start Date"/></p> <p>Schedule algorithms to use</p> <p><input type="text" value="Just this job"/> <input type="text" value="All consecutive jobs (up to gap)"/> <input type="text" value="All following jobs (close gaps)"/></p> <p>Manual move algorithms</p> <p>Gantt start Date is the date to view the schedule</p> <p>Days to view default 7 days or All days</p> <p>Gantt type by Resource or Works Order</p> <p>Zoom to change the schedule view</p> <p>Loading selector algorithm</p> <p>Restart the schedule</p> <p>Export the schedule result to a spreadsheet</p> <p>Search for a job</p>
--	---

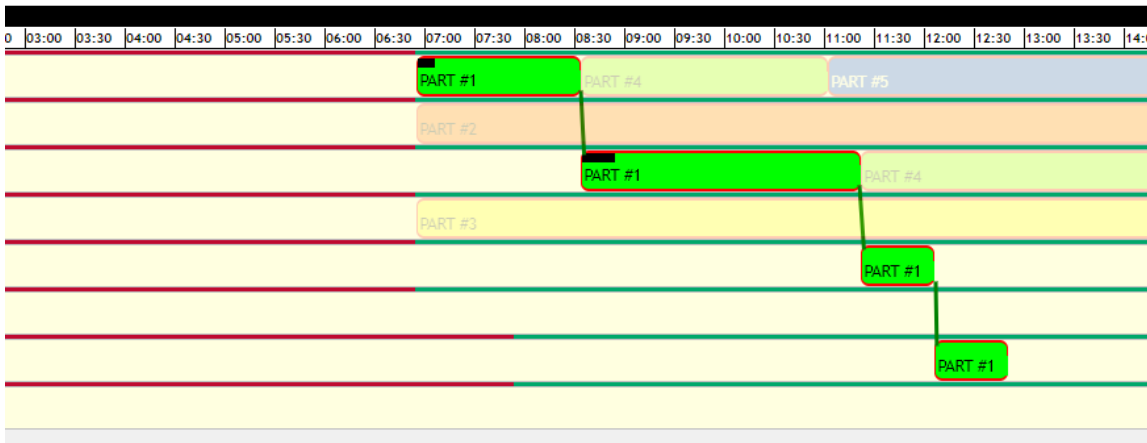


When there are jobs on the board you can click on one operation and the pop out window will be displayed. Three change operators are available:

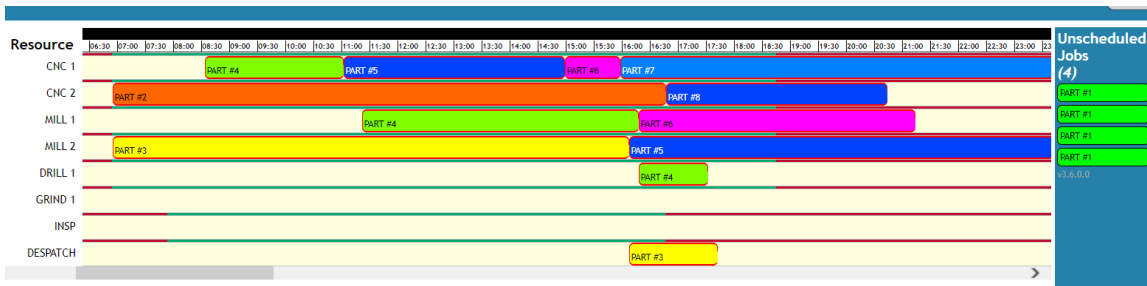
<p>The screenshot shows a 'Job Actions' window with the following details:</p> <ul style="list-style-type: none">Job Actions (with a green plus icon)ID: 2Proc. Order: 10SFJ Work Order: 10SKU Code: PART #1SKU Desc:Quantity To Make: 30CURRENT POSITION:Resource: MILL 1Launch Time: 21/12/2020 08:40Start Time: 21/12/2020 09:00End Time: 21/12/2020 11:30Show Linked Operations (with a blue square icon and three green squares)Unschedule this Op (with a red X icon)Unschedule whole Job (with a red X icon)Cancel button	<p>Click to show linked works order operations</p> <p>Click to unscheduled one op to the queue</p> <p>Click to unscheduled the whole works order</p>
---	--

Highlighted Linked Operations:

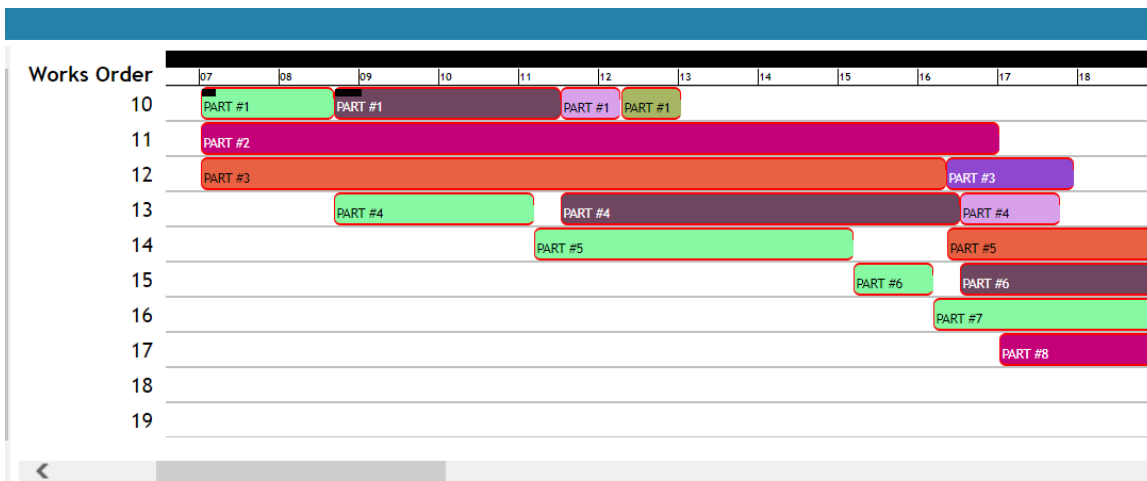
Web Scheduler Gantt



Remove from the schedule just one operation or unscheduled whole work order.



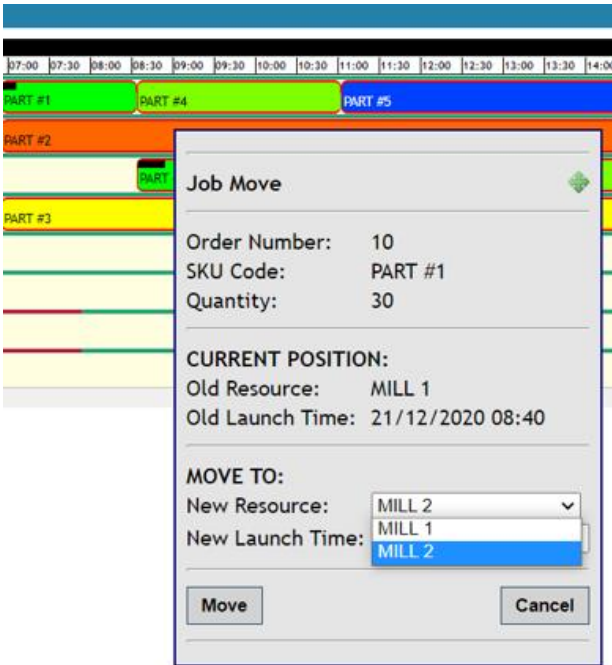
Standard view of the schedule is by resource but you can change it to display by the work order.





Manual grab and drop available:

You can grab and drop an operation on resource within a resource group. Also, you can pick it from drop down list.



There is also an option to change the operation start time. Either you will do it by drag and drop or you can manually change the new launch time

